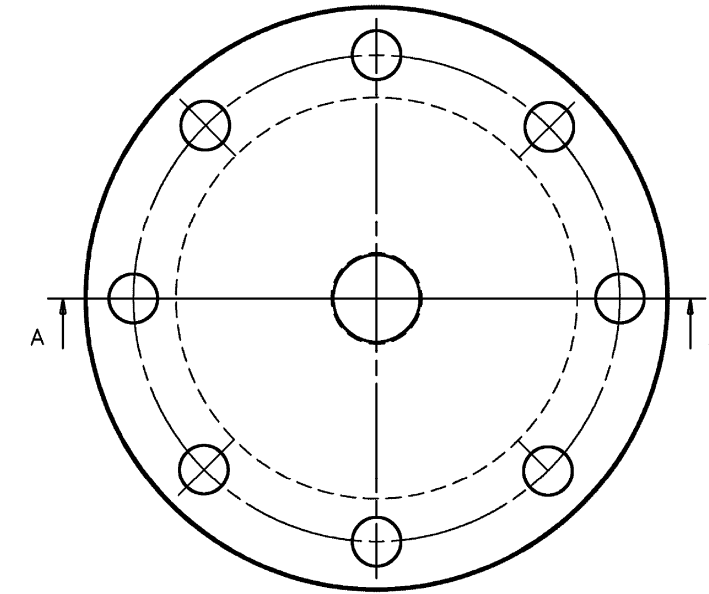
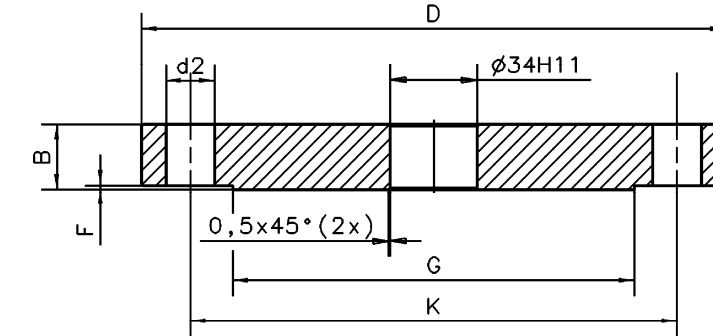
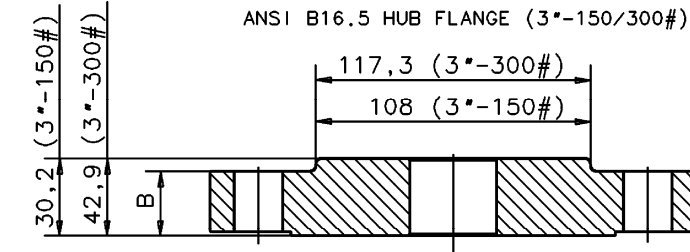


PART NO	FLANGE				DRILLING TEMPLATE		RAISED FACE		WEIGHT Kg	FLANGE TYPE	GASKET TYPE
	TYPE	ACC TO STD:	D	B	K	d2	G	F			
9150074-369	2"-150#	ANSI B16.5	∅152,4	19,05	∅120,6	∅19,05-4X	∅91,9	1,52	2,6		SEE NOTE 4
9150074-370	2"-300#	ANSI B16.5	∅165,1	22,3	∅127	∅19,05-8X	∅91,9	1,52	3,4		SEE NOTE 4
9150074-371	2 1/2"-150#	ANSI B16.5	∅177,8	22,3	∅139,7	∅19,05-8X	∅104,6	1,52	4,1		SEE NOTE 4
9150074-372	2 1/2"-300#	ANSI B16.5	∅190,5	25,4	∅149,4	∅22,35-8X	∅104,6	1,52	5,1		SEE NOTE 4
9150074-350	3"-150#	ANSI B16.5	∅190,5	23,8	∅152,4	∅19,05-4X	∅127	1,52	4,8	HUB	1a/1b
9150074-351	3"-300#	ANSI B16.5	∅209,5	28,6	∅168,3	∅22,2-8X	∅127	1,52	6,8	HUB	1a/1b
9150074-352	4"-150#	ANSI B16.5	∅228,6	23,8	∅190,5	∅19,05-8X	∅157,2	1,52	6,9		1a/1b
9150074-353	4"-300#	ANSI B16.5	∅254	31,8	∅200	∅22,2-8X	∅157,2	1,52	11,6		1a/1b
9150074-373	4"-600#	ANSI B16.5	∅273	44,4	∅215,9	∅25,4-8X	∅157,2	6,35	18		1a/1b
9150074-354	6"-150#	ANSI B16.5	∅279,4	25,4	∅241,3	∅22,2-8X	∅215,9	1,52	11,6		1a/1b
9150074-355	6"-300#	ANSI B16.5	∅317,5	36,6	∅269,9	∅22,2-12X	∅215,9	1,52	21,1		1a/1b
9150074-356	8"-150#	ANSI B16.5	∅342,9	28,5	∅298,4	∅22,2-8X	∅269,9	1,52	20,8		1a/1b
9150074-357	8"-300#	ANSI B16.5	∅381	41,3	∅330,2	∅25,4-12X	∅269,9	1,52	34,9		1a/1b
9150074-374	DN50 PN40	EN 1092-1	∅165	20	∅125	∅18-4X	NA	NA	3,2	TYPE 05	SEE NOTE 4
9150074-375	DN65 PN6	EN 1092-1	∅160	14	∅130	∅14-4X	NA	NA	2,2	TYPE 05	SEE NOTE 4
9150074-376	DN65 PN40	EN 1092-1	∅185	22	∅145	∅18-8X	NA	NA	4,3	TYPE 05	SEE NOTE 4
9150074-358	DN80 PN16	EN 1092-1	∅200	20	∅160	∅18-8X	NA	NA	4,7	TYPE 05	SEE NOTE 4
9150074-359	DN80 PN40	EN 1092-1	∅200	24	∅160	∅18-8X	NA	NA	5,8	TYPE 05	SEE NOTE 4
9150074-360	DN100 PN16	EN 1092-1	∅220	20	∅180	∅18-8X	NA	NA	5,5	TYPE 05	SEE NOTE 4
9150074-361	DN100 PN40	EN 1092-1	∅235	24	∅190	∅22-8X	NA	NA	7,4	TYPE 05	SEE NOTE 4
9150074-362	DN150 PN16	EN 1092-1	∅285	22	∅240	∅22-8X	NA	NA	10,3	TYPE 05	SEE NOTE 4
9150074-363	DN150 PN40	EN 1092-1	∅300	28	∅250	∅26-8X	NA	NA	14,4	TYPE 05	SEE NOTE 4
9150074-364	DN200 PN16	EN 1092-1	∅340	24	∅295	∅22-12X	NA	NA	16,3	TYPE 05	SEE NOTE 4
9150074-365	DN200 PN40	EN 1092-1	∅375	34	∅320	∅30-12X	NA	NA	27,4	TYPE 05	SEE NOTE 4
9150074-366	JIS 100 10K	JIS B 2220	∅210	18	∅175	∅19-8X	NA	NA	4,4		TYPE R
9150074-367	JIS 150 10K	JIS B 2220	∅280	22	∅240	∅23-8X	NA	NA	9,9		TYPE R
9150074-368	JIS 200 10K	JIS B 2220	∅330	22	∅290	∅23-12X	NA	NA	13,7		TYPE R



- ④ GASKETS FOR EN 1092-1 FLANGES:
SOFT GASKET (EN 1514-1) WITH MIN THICKNESS OF 1.5mm.
GASKET FOR ANSI B16.5 FLANGES:
SOFT GASKET (1a) WITH MIN THICKNESS OF 1.5mm.
- ③ DIMENSIONS AND TOLERANCES IN ACC. WITH ANSI B16.5, EN 1092-1 AND JIS B 2220 UNLESS OTHERWISE STATED (DIMENSIONS IN TABLE, ONLY REFERENCE MEASURES)
- ② MARKING: IN ACC WITH ANSI B16.5, EN AND JIS STD. (NO MARKING OF "B16.5", "1092-1" OR "2220" ON FLANGE)
- ① MATERIAL: STAINLESS STEEL A182 Gr.F316L AND EN 10222-5-1.4404 (BOTH MATERIALS MARKED ON THE FLANGE AND INCLUDED IN THE INSPECTION DOCUMENT)

9150074-672	ISSUED BY: GU-HF	WEEK: 0224	PRODUCT CODE: PRO	MATERIAL: SEE NOTE 1.
	APPROVED BY: GU-MK	WEEK: 0224	DOC. TYPE: 0	FILE: I-DEAS
	ALL DIMENSIONS ARE IN MILLIMETRES.		FINISH, UNLESS OTHERWISE STATED:	
	TOLERANCES, UNLESS OTHERWISE STATED:		6.3	
FOR MACHINING: ISO 2768 mK		FOR CASTING: ISO 8062 CT10		
FOR WELDING: SS-EN ISO 13920 A,E		1 ST ANGLE		
SAAB ROSEMOUNT		SCALE: -		
DNG NO. 9150074-672			ISSUE SHEET 1 / 1	
THE COPYRIGHT/OWNERSHIP OF THIS DOCUMENT IS AND WILL REMAIN OURS. THE DOCUMENT MUST NOT BE USED WITHOUT OUR AUTHORIZATION OR BROUGHT TO THE KNOWLEDGE OF A THIRD PARTY. CONTRAVENTION WILL BE PROSECUTED. SAAB MARINE ELECTRONICS.				

9150074-672